

# CHUNG-ANG UNIVERSITY INTERNATIONAL PROGRAM



Open Your Future  
@CAU in Seoul, Korea

**Contact Us**  
Office of International Affairs  
84 Heukseok-ro, Dongjak-gu, Seoul 06974, Korea  
Tel: 82-2-820-6573, 6202, 6744, 6574, 6531  
Fax: 82-2-813-8069  
Email: [inbound@cau.ac.kr](mailto:inbound@cau.ac.kr)  
<http://oia.cau.ac.kr>







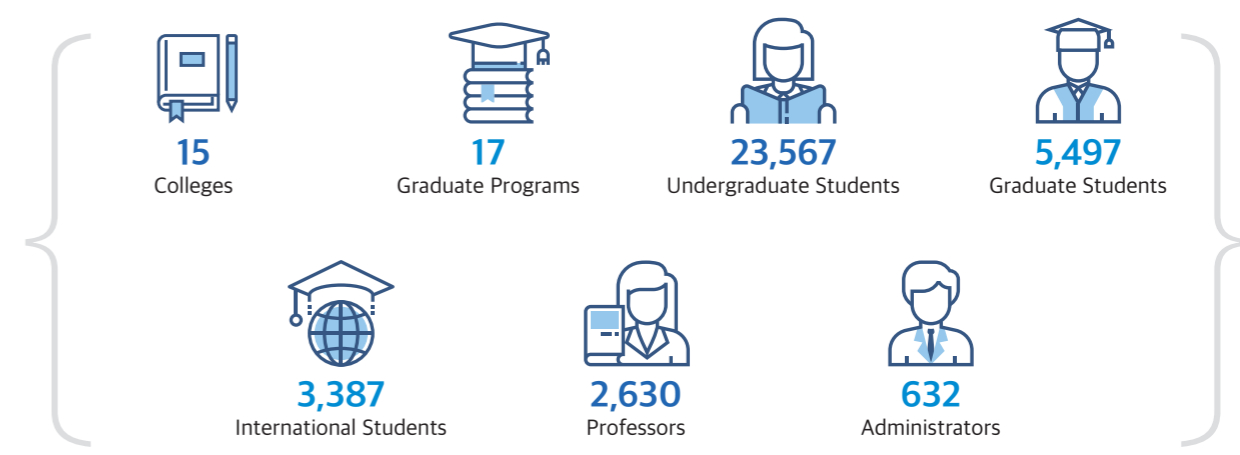
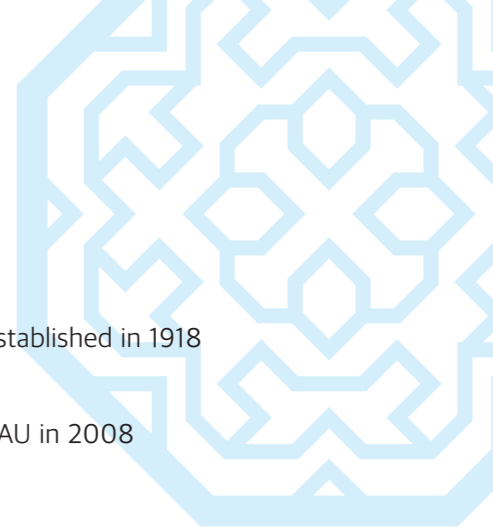
## Contents

- 04 | Korea and Seoul
- 05 | Campuses
- 06 | History of Chung-Ang University
- 08 | About CAU
- 10 | Study Abroad and Exchange Program
- 12 | Cultural Activities
- 13 | CAU Global Ambassadors
- 14 | International Summer / Winter Program
- 16 | Customized Study Tour Program
- 18 | Blue Mir Hall (Dormitory)
- 19 | International Partners
- 22 | Fields of Study



## CHUNG-ANG UNIVERSITY

- A leading private comprehensive university established in 1918
- Campuses : Seoul and Anseong
- Korean conglomerate Doosan incorporated CAU in 2008







# Republic of KOREA



The Republic of Korea is a small country on the far eastern edge of Asia. Although it ranks 106<sup>th</sup> in the world in terms of land area, the country is a center of economic activity, culture, and arts. Today, Korea is an industrial nation standing tall on the world stage. Korea's semiconductor, automobile, shipbuilding, steel and IT industries are leaders in the world's global markets. Korea has also been host to the 1988 World Olympic Summer Games in Seoul, the 2002 Korea-Japan FIFA Worldcup and the 2018 World Olympic Winter Games in PyeongChang. Recently, Korean dramas, movies, and music are attracting many audiences in Asian countries and beyond, creating the "Korean Wave." Korea's new standing in the international community was highlighted in 2010 by becoming the first Asian country to chair the G20 and host the G20 Seoul Summit.



### Some figures to show Korea's status in the international level:

- 12<sup>th</sup> GDP / 6<sup>th</sup> Exports / 9<sup>th</sup> Imports (2017)
- 20<sup>th</sup> Foreign Direct Investment (2017)
- 109<sup>th</sup> Territorial Area (2018)
- 28<sup>th</sup> Population Size (2019)



## SEOUL

Seoul is the world's 5<sup>th</sup> largest city. It is also the center of all political, economic and cultural activities in Korea. Korea's past and present coexists harmoniously — with a heritage that spans across centuries and a future that lies on the cutting-edge technology of its IT industry. The city is surrounded by beautiful mountains and is built around the banks of the Han River. The nearest seaside is located only an hour away from Seoul.

## Campuses



Seoul Campus

Located in the heart of Seoul near the National Cemetery on the southern side of Han River.



Anseong Campus

Situated on the outskirts of Anseong City, Gyeonggi-do Province, which is about one hour ride from Seoul campus.

Administrative and systemic integration of the Seoul Campus and Anseong Campus has allowed the seamless creation of a single Chung-Ang University Campus, undivided by distance. The united campuses have been together since July 2011. This has brought Chung-Ang closer to achieving its vision of offering world class education and academic excellence through efficient management.



# History of Chung-Ang University

- 1918 Foundation
- 1918-1945 Foundation & Trial
- 1946-1986 Growth & Development
- 1987-2004 Reformation & Change
- 2005-2010 Innovation & Growth
- 2012 New Start

**1918**  
Established Chung-Ang Kindergarten as an annex to Chung-Ang Methodist Church in Seoul, as the first and only educational entity fully founded and supported by Koreans.

**1922**  
Upgraded Chung-Ang Kindergarten's training school for teachers to Chung-Ang Training School for Kindergarten Teachers.

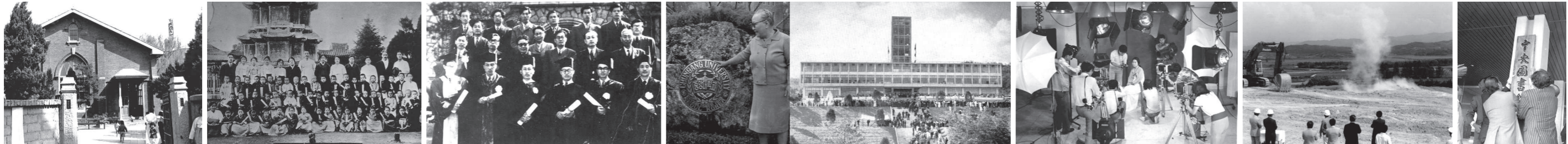
**1947**  
Renamed as Chung-Ang Junior Women's College, and was changed to Chung-Ang Women's College.

**1953**  
Accredited as Chung-Ang University which consisted of the College of Liberal Arts & Science, the College of Law, the College of Business, and the College of Pharmacy.  
  
Inaugurated Dr. Yim Young-shin as the first president.

**1965**  
Adopted sister middle school and high school as affiliates in 1965 and soon afterwards an affiliated elementary school as well in an effort to deliver consistent well-rounded education from kindergarten to graduate school.

**1970**  
Added the College of Medicine to its list of undergraduate Schools and took over Seong Shim Hospital.

**1980**  
Extended its infrastructure on Anseong campus to accommodate seven undergraduate schools between 1980 and 1984.



**2004**  
Awarded as "a" Top University for Areas of Specialization.  
  
Ranked fourth in the National Customer Satisfaction Index university category.

**2005**  
Ranked First in employment rate by the Ministry of Education&Human resources.  
  
Selected Top university(graduate school) based on general university evaluation.

**2008**  
Incorporated as an educational institution by the global corporation, Doosan Group.

**2012**  
Merged with the Red Cross College of Nursing to become the largest School of Nursing in Korea.  
  
Approval to unify the Seoul and Anseong campuses.

**2013**  
Inauguration of the 14th President Dr. Lee Yong-goo.  
  
Framework Convention on the Incheon Campus signed with Incheon Metropolitan Government.

**2014**  
The launch of Department of ICT(Information and Communication Technology).  
  
The launch of school's centennial anniversary committee.

**2015**  
Opened 2nd state of the art dormitory(2nd Blue Mir Hall).  
  
**2016**  
Opening centennial memorial hall

**2018**  
Centennial Anniversary  
  
Hosting 2018 14th QS APPLÉ Conference  
  
CAU 2030 Announced





# About CAU

## 🌐 Incorporation of Chung-Ang University by Doosan

CAU has dramatically developed since its incorporation as an educational institution with the global corporation Doosan Group.

Since Doosan started managing CAU, the university has gone through powerful self-reforms and gained a higher reputation as an educational institution. The innovation of CAU is growing stronger, building up for another take off.

- 2019 QS World Ranking 397<sup>th</sup>, 2019 THE Asia-Pacific Ranking 72<sup>nd</sup>, 2018 THE Asia Ranking 50<sup>th</sup>



- Korea's oldest business organization with a proud history of 124 years
- Enriching the world as an ISB(Infrastructure Support Business) Leader
- Operates 25 domestic and 115 overseas subsidiaries



## 🌐 Innovation and Integration

Chung-Ang University has reorganized its previous academic management system to improve its overall educational competitiveness.

*52 departments and 15 Colleges*

CAU's integration of the main school and branch school, merging with the Red Cross College of Nursing, and an initiative for multi-campus are all evidence of CAU's efforts to raise its competitiveness and provide a higher quality of education by merging overlapping departments and nurturing real student talents to be ready and wanted in the global market.

*Launch of Korea's Largest College of Nursing*

CAU consolidated all of its medical related majors, medicine, pharmacy and nursing, into one location through the addition of 1,000 beds to CAU hospital and the construction of Building 102.

*Integration of the Main School and Branch School*

As the first university in Korea to integrate the main school and branch school. CAU is now able to operate student quota and education space of each campus more efficiently.



## 🌐 First to Establish in Korea

*School of Economics, School of Pharmacy, School of Business Administration, Department of Advertising and Public Relations, School of Performing Arts and Media, School of Mass Communication*

With a long history and deep tradition, Chung-Ang University is proud of its various departments. Chung-Ang University is constantly striving towards becoming the best in Korea and one of the best in the world.

In particular, its culture and arts-related programs have been widely recognized as the best in the nation and have enabled the university to gain the status as the center of the recent "Korean Culture Wave" outside of Asia.

## 🌐 Chung-Ang Proves its Worth with its Exceptional Alumni

Currently, Chung-Ang University is in pursuit of a vision to create a global top tier university, through its CAU2030 plan : outstanding performances and global reputation in the fields of human & physical infrastructure research, education and internationalization, etc. that are foundation of sustainable growth. This goal will lead CAU to the future of higher education based on the innovative mind.

## 🌐 The Preferred University by Korean Students

Chung-Ang University continues to gain status as a first-choice university by Korean students.

Admission standards have increased along with higher enrollment rates from 14:1 (applicants 28,850 / admissions 2,055) in 2008 to 18.7:1 applicants 90,262 / admissions 4,829 in 2019

It is evident from these figures that since the university's incorporation by Doosan — increasing its educational budget — and the university's intensive reforms for better education, Korean students have renewed their trust and expectations in the quality of education provided by Chung-Ang University.

# Study Abroad and Exchange Program

## Experience a Unique Study Abroad and Exchange Program at CAU

- > See and experience the epicenter of the Korean Wave
- > Sign up for over 1,000 courses offered in English in a variety of subject areas
- > Take customized courses specifically for exchange students on Korean Studies
- > Join in on numerous cultural excursions and field trips
- > Apply for an on-campus internship
- > Receive special scholarships as a student from our partner institutions



### Academic Schedule

The CAU Academic Schedule consists of two semesters each for the duration of 16 weeks. Students can apply for one semester or one academic year, starting in either Spring or Fall.

	Spring Semester	Fall Semester
Application	Mid Nov.	Mid May
Semester	March 16 <sup>th</sup> ~ June 26 <sup>th</sup>	Sep. 1 <sup>st</sup> ~ Dec. 21 <sup>st</sup>



### CAU Exchange Program

#### Regular Exchange Students

All students from CAU Partner Universities who are interested in studying abroad for one semester or a year can apply as regular exchange students.

#### Non-Partner University Students

CAU Program for Non-partner University students is designed to give students an opportunity to study at CAU. Students in this program can study at CAU under the same conditions and privileges as regular exchange students, while paying tuition to CAU. This program allows students to participate in one semester of study at CAU with the permission of their home university.

### Courses

The core principles of a university are its people and academic disciplines. Chung-Ang University is dedicated to follow these principles and to become a better university. Students can study and research in a studious environment from 60 different majors and take courses offered in English. Students can also take Korean-related courses to get an in-depth understanding of Korean culture and society.

For a complete list of courses please visit the following link:  
<http://oia.cau.ac.kr>

### Global Lounge

CAU offers a Global Lounge for exchange students. In the Global Lounge, exchange students have the opportunity to converse with Korean students and improve their Korean language skills. This is a wonderful opportunity for exchange students to connect with local Korean students and learn some useful phrases that will help them during their stay in Korea.

### Application Procedure

**A. Online Application Submission :** [http://neweng.cau.ac.kr/04\\_international/exprogram08.php](http://neweng.cau.ac.kr/04_international/exprogram08.php)

#### B. Online Documents Submission

1. Completed Online Application Form
2. Official Academic Transcript
3. Photograph (front, hatless, passport style): 3.5 × 4.5cm
4. Copy of Passport
5. Nomination letter from international related office at home University
6. Declaration and Certification of Finance
7. Signed Dormitory Agreement (if applying for on-campus housing)

### Scholarship Opportunities

#### A. CAU Global Scholarship

	Eligibility	Benefits
CAU GSI (Global Student Internship)	Qualified students who are Native Speakers of English or French	<ul style="list-style-type: none"> <li>• An on-campus internship opportunity</li> <li>• Maximum of \$1400 per semester</li> </ul>
CAU OIA-Fellowship	<ul style="list-style-type: none"> <li>• Foreign CAU exchange students</li> <li>• International Exchange Student Advisors</li> </ul>	<ul style="list-style-type: none"> <li>• Maximum of \$1000 per month</li> <li>• Accommodation expenses</li> </ul>
CAU GOS (Global Opportunity Scholarship)	CAU Exchange students from eligible designated countries	<ul style="list-style-type: none"> <li>• Living &amp; On-campus accommodation expenses</li> </ul>

#### B. Global Korea Scholarship

GKS (Global Korea Scholarship) is a scholarship sponsored by the NIIE (National Institute for International Education in Korea).

- **Eligibility:** Qualified CAU Exchange Students and scholarship applicants
- **Benefits:** Airfare, Monthly Stipend, Settlement Allowance, and Insurance Fee

#### C. ASEM DUO Scholarship

DUO-Korea Scholarship is a scholarship promoting education exchanges between Korea and European countries. This scholarship is offered to pairs of students.

- **Eligibility:** Students from European partners universities
- **Benefits:** 8,000 Euros for a pair of students (4,000 Euros for each student)

### Costs

Tuition is waived for international exchange students. However, students are responsible for housing and meal costs unless the exchange agreement has a waiver provision. The estimated costs are as follows:

	Amount
Housing(Dormitory)	\$1,300
Meals	\$700
Transportation	\$600
Books and Supplies	\$200
Personal Expenses	\$1500
<b>Total</b>	<b>\$4,300</b>

※ The above fees are based on the one semester and are subject to change.





## Cultural Activities (CKEP: CAU Korea Exploration Program)

Chung-Ang University not only offers curriculum and educational services of the highest standard but also provides an opportunity for International Students to personally experience Korean culture through many cultural activities.



### Traditional Culture Activities



International students are invited to see, feel and enjoy Korean traditional culture in the traditional-style village (Korean folk village or Hanok village) that recreates the lifestyle of several centuries ago. They will have chances to explore traditional housing, clothing, customs and have traditional Korean food and can witness and immerse themselves in traditional Korean lifestyle and culture.

### Exploring the Landscape of Korea

Even though in terms of land Korea is small, it is a country filled with beautiful and natural sceneries. It is a country with four distinct seasons that provides an opportunity for distinct seasonal activities. In the summer, you can walk on the beach through natural tidal flats. In the fall, you can enjoy the beautiful autumn leaves on natural landscapes and beautiful mountains. In the winter, experience the snow covered mountains and scenery on a trip to a ski resort. This exchange program is not only for learning but also an opportunity for International Students to experience the beautiful landscape and seasons of Korea.



### Join in Interactive Activities with Local Students.

#### Sports Games

International students will have chances to watch Korean professional baseball/football/basketball leagues with local students and will experience the Korean sports game and cheering culture.

#### Chung-Ang Festival (CAURIVAL)

International students can participate in an annual Chung-Ang festival during the semester. During CAURIVAL festival, international students can interact with native Chung-Ang University students through activities and games and can also introduce themselves and share each other's cultures during this time. Performances on campus by famous celebrities, such as PSY, are also popular entertainment for exchange students and their friends.



## CAU Global Ambassadors (GLAM)

CAU Global Ambassadors are student leaders who support Chung-Ang University's campus globalization. They are a group of students who are selected and trained to facilitate global activities on CAU Campus and offer friendly advice and help for exchange students.



### Friend and Campus Life Advisor

CAU Global Ambassadors will help international students adjust to campus life and promote interaction between international students and Chung-Ang students. They play the role of friends, Korean language and culture tutors and campus life advisers.



### Pre-Arrival Assistance

Global Ambassadors can help the exchange students before their arrival to Chung-Ang University and throughout the semester regarding living in Korea and the campus life through the perspective of a Chung-Ang University student. Conversation and interaction between ambassadors and exchange students are encouraged.



### Airport Pick-Up

Based on a designated pick-up schedule, CAU Global Ambassadors will provide pick-up service for exchange students and help them to find their way onto campus and give a short orientation regarding campus and dormitory life.



### Cultural Events and Excursion

CAU International Office offers various cultural events and excursions where both CAU Global Ambassadors and exchange students can participate and explore Korean Culture.



### Student Club or Small Group for Exchange Students

Depending on the number of students, those who share similar interests may organize a small group or club for CAU Global Ambassadors and exchange students.



GLAMs are here to help exchange students!

# International Summer / Winter Program

causummer.com

cawinter.com



## Academic Achievement and Korean Culture

- > Live high in comfort at a low in cost
- > Learn at the best university in Culture and Arts Korea
- > A hands-on introduction to Korea while earning credits in core subjects for your home university.
- > Earn transferable credit hours upon successful completion of this program
- > Learn, have fun, and bond with International and Korean Students
- > Special Scholarships for Partner Institution Students

### Lectures

#### A. Summer Session 1 (6 Credits)

Type	Course	
Major A (3 Credits, 6 ECTS)	Business	Logistics and Economic Development Integrated Marketing Communication
	Software Engineering	Contents Planning and Development
	International Relations	Understanding International Relations : Issues, Controversies, and Perspectives
	Technology	Nanotechnology in Everyday Life
	Media	New Media and Society
	Korean Language	Basic Korean Intermediate Korean Advanced Korean
Major B (3 Credits, 6 ECTS)	Korean Society and Culture	5 Special Lectures ( 15 hours) and various cultural activities

- ※ Specific elective course titles will be updated every summer.
- ※ Insufficient enrollment can be cause for cancellation of any of the classes
- ※ The above courses are subject to change without prior notice.

#### B. Summer Session 2 (5 Credits)/ Winter (4 Credits)

Students enrolled in Session 2 of the summer program & Winter Program will take courses focusing on Korean Language coupled with classes covering Korean Culture and Society.

Korean Language (3 Credits for ISP / 2 Credits for IWP)	Korean Studies (2 Credits)
Korean Language : Basic, Intermediate, Advanced	Lectures related to Korean culture and society
	<ul style="list-style-type: none"> <li>• Korea from a Foreigner's Point of View</li> <li>• Korean Folklore Culture</li> <li>• Korean Pop Culture</li> <li>• Korean Economic Development</li> <li>• Intro of Korean Arts</li> </ul>
	Cultural activities and Field trips

- ※ The above courses are subject to change without prior notice.



### Experiential Learning

Student will have chance to experience Korean culture and society first hand through lectures, academic excursions, cultural experiences and field trips.

Some culture trips include the Seoul City Tour, Visiting Korean Corporations, Field Trip to Gangwon-do, DMZ (Demilitarized Zone), Korean Folk Village, Korean Culinary Experience, Taekwondo, Experience Wearing Hanbok (Traditional Korean Costume), Traditional Korean Music and instruments, Korean Ceramic Art.

### Academic Schedule

	Summer Session 1	Summer Session 2	Winter Session
Application Deadline	Middle of May	Middle of May	End of November
Program Period	End of June to End of July	End of July to Middle of August	Middle of January to End of January

### Qualification

All Students who are currently enrolled at college or university level institutions. English proficiency for non-native speakers. (TOEFL is not required, however, your English should be proficient enough to take courses conducted in English)

### Application Procedure

Fill out and submit the online application form (causummer.com or cawinter.com)  
 ➡ Attach the application materials to the online system ➡ Receive confirmation email with invoice ➡ Pay tuition ➡ Receive a Letter of Admission ➡ Come to CAU!

### Fees and Payment (USD)

*Affordable and Incredible!*

	Summer Session 1		Summer Session 2		Winter Session	
	Regular Students	Partner university Student	Regular Student	Partner university Student	Regular Student	Partner university Student
Application Fee	60	-	60	-	60	-
Tuition	6 Credits   3,000	1,500	5 Credits   2,600	1,300	2,200	1,100
pick-up	50	-	50	-	50	-
Dormitory	378	378	280	280	224	224
Total	3,488	1,878	2,990	1,580	2,534	1,324

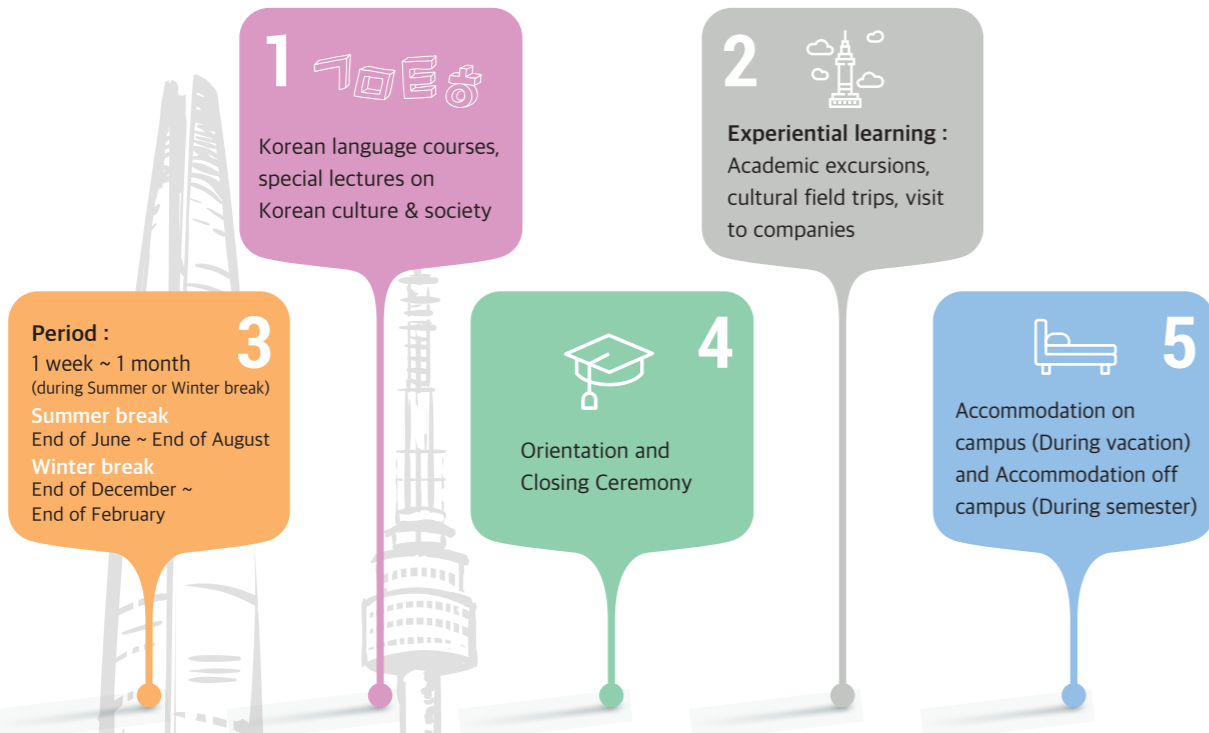
- ※ The above fees are subject to change.
- ※ The full tuition waiver will be given to the students nominated by partner universities as exchange students under the exchange arrangement.



# Customized Study Tour Program

The Office of International Affairs is happy to provide customized study tour programs for colleges and universities overseas. We work closely with each group to design a program that will meet the needs and objectives of the course or program. The program aims to provide opportunities to learn Korean culture and society and have cultural experiences for fostering an understanding of Korean culture and society. Your students can expand their world view through an understanding of Korea by interacting with local students and faculty who can share their perspectives on life in Korea.

## CAU customized study tour program includes:



## Program Example

**Week 1 ~ Week 2 (10 days)**

- 1** Arrival in Seoul, orientation session, campus tour, and welcome dinner
- 2** Accommodation for 10 days in the CAU dormitory
- 3** **Special lectures on Korean culture and society :**  
North Korean Politics and South-North Korean Relations, Innovation in Korea, Korean Wave and Korean Media
- 4** **Cultural and leisure activities :**  
Seoul City Tour, The Royal Palace, Field trip visit to DMZ(Demilitarized Zone), Korean folk village, Nanta concert
- 5** **Weekend Excursions :**  
Traditional Hanok Homestay
- 6** **Visit corporate companies :**  
Doosan Heavy Industries & Construction, Hyundai Motors
- 7** Meeting and discussion with local students about the Korean society and Korean Wave
- 8** Closing ceremony and Award of Certificates at University



- Study Abroad and Exchange Program
- Cultural Activities
- CAU Global Ambassadors
- International Summer / Winter Program
- Customized Study Tour Program
- Blue Mir Hall
- International Partners
- Fields of Study



# Blue Mir Hall



## Chung-Ang University Dormitory

The best and most advanced university dormitory in Korea, Blue Mir Hall was built using Mondrian abstract art that balances symmetry and order and is one of the newest landmarks of Chung-Ang University. This residential building is surrounded by a small natural forested environment. The building is equipped with the state of the art air conditioning and heating system, high speed wireless internet access, a large dining area, fitness center, cafe and a lounge.

Blue Mir Hall 1 & Blue Mir Hall 2 can accommodate up to 2,400 students and has a gross floor area of 53,110 square meters. Blue Mir Hall 1 is 15 stories high with two basement floors, Blue Mir Hall 2 is 14 stories high with one basement floor. With a pleasant living environment and a hotel level of amenities, Blue Mir Hall brings a sense of comfort and joy to all. Exchange students even receive priority housing placement in Blue Mir Hall.

### Rooms



With a view of the city and luscious green scenery, each room comes with bright lighting, internet access, desk, shower, and lavatory to provide the most pleasant and comfortable campus life to each and every student.

### Guest House

This is available for visiting professors or researchers at Chung-Ang University. The guest house can accommodate single visitors or visitors and their families. Each guest house comes equipped with bright lighting, internet access, desk, shower, lavatory, kitchen, refrigerator, and a television.



Television



Sky Park



Laundry Room



Restaurant



Fitness



Computer



# International Partners

## Americas

### Brazil



Brazilian Association (ABRUEM)  
The Federal University of Minas Gerais (UFMG)  
Mackenzie Presbyterian University  
Pontifical Catholic University of Rio de Janeiro  
University of Campinas

### Canada



Ryerson University  
Lakehead University  
Memorial University of Newfoundland  
Memorial University of Newfoundland, Grenfell Campus  
Memorial University of Newfoundland, St. John's Campus  
University of Alberta  
University of Manitoba  
University of Ottawa  
University of Saskatchewan  
University of the Fraser Valley  
Vancouver Island University

### Chile



Finis Terrae University  
Universidad de los Andes

### Columbia



Universidad de los Andes  
Universidad del Rosario  
Universidad Tecnológica de Bolívar

### Costa Rica



Universidad Latina De Costa Rica

### Mexico



Tecnologico De Monterrey  
Universidad de Monterrey  
Universidad La Salle  
Universidad Tecmilenio  
Universidad Nacional Autonoma de Mexico

### Peru



Universidad San Ignacio de Loyola S.A.

### Uruguay



Universidad ORT Uruguay

### USA



Alaska Methodist University  
Alaska Pacific University  
American University  
Asia Pacific College (CAPE)  
Brookhaven College  
California State University, Bakersfield  
California State University, East Bay  
California State University, Fullerton  
California State University, Long Beach

California State University, Los Angeles  
California State University, Sacramento  
California State University, Stanislaus  
Campbellsville University  
Central Washington University  
Columbia College  
Findlay College  
George Washington University  
Georgia State University  
Hawaii Pacific University  
Kansas State University  
Michigan State University, VIPP  
Mississippi State University  
Minnesota State University, Moorhead  
Monterey Institute of International Studies  
North Dakota State University  
Oklahoma State University  
School of Visual Arts  
Southeast Missouri State University  
Southwest State University  
St. Louis College of Pharmacy  
State University of New York, Oneonta  
State University of New York, Oswego  
State University of New York, Plattsburgh  
Stevens Institute of Technology  
Temple University  
Towson University  
Tufts University  
University of Cincinnati  
University of Hawaii, Hilo  
University of Houston  
University of Iowa  
University of Nebraska, Kearney  
University of North Carolina, Chapel Hill  
University of San Francisco  
University of Southern California  
University of Wisconsin, Stout  
Utah State University  
Virginia Commonwealth University  
Widener University  
Winona State University

## Asia

### Bangladesh



Daffodil International University

### Brunei



Universiti Brunei Darussalam

### Cambodia



Life University  
Pannasastra University of Cambodia  
The Royal University of Fine Arts

### China



Beihang University  
Beijing International Studies University  
Beijing Normal University  
Capital Normal University  
Central University of Finance and Economics  
Central University of Nationalities  
Chang'an University  
Changchun University of Technology  
China Univ. of Politic Science and Law  
China University of Geosciences  
Chinese Academy of Sciences'Inst' of Automation  
City University of Hong Kong  
Communication University of China, Nanjing  
Dalian Art College  
Dalian Maritime University  
Dalian University of Technology  
Fudan University  
Guangdong University of Foreign Studies

Guilin University of Technology  
Harbin Engineering University  
Harbin Institute of Technology  
Henan Normal University  
Hong Kong Baptist University  
Hong Kong College of Technology  
Hong Kong Shue Yan University  
Hubei Institute of Fine Arts  
Institute for Tourism Studie  
Institute of Advanced Technology Heilongjiang Acad  
Jiangsu Ocean University  
Jilin Agricultural University  
Jilin Normal University  
Jinan University  
Jinling Institute of Technology  
Lanzhou University  
Liaoning University  
Lignan University  
Macau University of Science and Technology  
Nanjing University  
Nanjing University of the Arts  
Nankai University  
National Academy of Chinese Theatre Arts  
Northeast Normal University  
Northeastern University  
Northwest University of Politics & Law  
Northwestern Polytechnical University  
Qingdao Agricultural University  
Renmin University of China  
Shandong University of Finance and Economics  
Shandong University of Technology  
Shandong University  
Shanghai Jiao Tong University  
Shanghai University  
Shenzhen University  
Sichuan Fine Arts Institute  
Sichuan International Studies University  
Sichuan Normal University  
Sichuan University  
South China Normal University  
Southwestern University of Finance and Economics  
The Chinese University of Hong Kong (Shenzhen)  
The Education University of Hong Kong  
The Hang Seng University of Hong Kong  
The Hong Kong Polytechnic University  
Tianjin Foreign Studies University  
University of International Business and Economics  
University of Nottingham, Ningbo  
Wuhan University  
Xiamen University  
Xi'an International University  
Xiangtan University  
Yanbian University  
Yangzhou University  
Zhanjiang Normal University  
Zhengzhou University

### India



Banaras Hindu University  
Chandigarh University  
Chitkara University  
Indian Institute of Technology Madras  
S. V. National Institute of Technology, Surat  
Vel Tech Dr.RR & Dr.SR Technical University

### Indonesia



Atma Jaya Catholic University  
Binus University  
Bogor Agricultural University  
Diponegoro University  
Duta Wacana Christian University  
Gadjah Mada University  
Institut Teknologi Bandung  
Sepuluh Nopember Institute of Technology  
Syiah Kuala University  
Universitas Airlangga  
University of Surabaya

Study  
Abroad  
and  
Exchange  
Program

Cultural  
Activities

CAU Global  
Ambassadors

International  
Summer /  
Winter  
Program

Customized  
Study  
Tour  
Program

Blue Mir Hall

International  
Partners

Fields of  
Study



**Japan**



Aichi Shukutoku University  
Aichi University  
Chiba University  
Chuo University  
Doshisha University  
Hokkaido University  
Hosei University  
J.F.Oberlin University  
Kagoshima University  
Kindai University  
Kobe University  
Kochi University  
Kwansai Gakuin University  
Kyushu Sangyo University  
Kyushu University  
Mie University  
Nagasaki University  
Ateneo de Manila University  
De La Salle University  
Mapua Institute of Technology  
The Polytechnic University of the Philippines  
University of San Carlos  
University of The Philippines Diliman

**Jordan**



Jordan University of Science and Technology

**Kazakhstan**



Al-Farabi Kazakh National University  
Kazakh Ablai Khan University of IRWL  
Kazakh Academy of Sports and Tourism  
Kazakh National Pedagogical University named after Abay  
Kazakhstan Institute of Management, Economics and Strategic Research  
Korkyt Ata Kyzylorda State University

**Kyrgyz**



Bishkek Humanities University

**Lebanon**



American University of Beirut  
Lebanese American University

**Malaysia**



HELP University  
Limkokwing University of Creative Technology  
Taylor's University Universiti Putra Malaysia  
The Malaysia University of Science and Technology  
UCSI University  
Universiti Malaysia Pahang  
Universiti Kebangsaan Malaysia  
University of Malaya  
Universiti Putra Malaysia

**Mongolia**



Mongolian University of Arts and Culture  
Mongolian University of Science and Technology  
Ulaanbaatar University

**North Korea**



Pyongyang University of Science and Technology

**Pakistan**



National University of Sciences and Technology

**Philippines**



Adamson University  
Ateneo de Manila University  
De La Salle University  
Mapua Institute of Technology  
The Polytechnic University of the Philippines  
University of San Carlos  
University of The Philippines Diliman

**Singapore**



Nanyang Technological University  
Singapore Institute of Management  
Singapore Management University  
Singapore Polytechnic

**Taiwan**



Asia University  
Chung Yuan Christian University  
Feng Chia University  
Fu Jen Catholic University  
Hsing Wu University  
Ming Chuan University  
National Central University  
National Chengchi University  
National Chi Nan University  
National Chiao Tung University  
National Chung Cheng University  
National Chung Hsing University  
National Dong Hwa University  
National Kaohsiung Normal University  
National Sun Yat Sen University  
National Taipei University of Technology  
National Taiwan Normal University  
National Taiwan Ocean University, ROC  
National Taiwan University of Arts  
National Taiwan University of Science and Technology  
National Tsing Hua University  
National University of Kaohsiung  
National Yang-Ming University  
Shih Hsin University  
Soochow University  
Tainan University of Technology  
Tamkang University  
Tatung University  
University of Taipei

**Thailand**



Burapha University  
Chiang Mai University  
Chulalongkorn University  
Kasetsart University  
Khon Kaen University  
King Mongkut's Institute of Technology Ladkrabang  
King Mongkut's University of Technology North Bangkok  
King Mongkut's University of Technology Thonburi  
Prince of Songkla University  
Silpakorn University

**United Arab Emirates**



Canadian University Dubai  
Institute of Management Technology  
RAK Medical & Health Sciences University

**Uzbekistan**



Tashkent State Institute of Oriental Studies  
Tashkent State Pedagogical University named after Nizami  
Uzbek State University of World Languages

**Vietnam**



Dalat University  
Foreign Trade University  
Ha Noi University of Industry  
Hanoi University of Pharmacy  
Hoa Sen University  
Ho Chi Minh City University of Technology  
Hue University  
Hue University of Medicine and Pharmacy  
Ton Duc Thang University  
University of Economics Ho Chi Minh City  
University of Medicine and Pharmacy HoChiMinh City  
Vietnam International Education Development  
VNU Hanoi, College of Foreign Languages  
VNU Hanoi, University of Economics and Business  
VNU Hanoi, University of Languages&International Studies  
VNU Hanoi, University of Social Sciences & Humanities  
VNU Hanoi, University of Engineering & Technology  
VNU Hanoi, University of Science  
VNU-HCM, Univ. of Social Sciences & Humanities  
VNU-HCM, University of Economics  
VNU-HCMC University of Economics and Law

**Europe**

**Austria**



University of Applied Sciences Bfi Vienna  
Alpen adria Universitaet Klagenfurt

**Belgium**



ICHEC Brussels Management School  
University of Namur

**Czech Republic**



University of Ostrava  
VSB-Technical University of Ostrava

**Denmark**



Copenhagen Business School  
Jutland Art Academy  
Roskilde University  
University of Southern Denmark

**Estonia**



University of Tartu

**Finland**



Aalto University  
South-Eastern Finland University of Applied Sciences  
Savonia University of Applied Science  
University of Turku

**France**



Association Leonard de Vinci  
ECE Paris-Ecole d Ingenieurs  
EDHEC Business School  
ESCE International Business School  
ESSCA School of Management, EDHEC Business School  
European Institute of Technology(EPITECH)  
Haute ecole des arts du Rhin(HEAR)  
IGS Groupe  
INSA Rouen Normandie  
INSA Toulouse  
INSEEC School of Business and Economics  
IPAG Business School  
IPSA(Polytechnic Institute of Advanced Science)  
ISC Paris School of Management  
ISEN Lille  
ISTC (Strategies Et Communications)  
Lumiere University Lyon 2  
Paris West University Nanterre La Defense  
Sciences Po Bordeaux  
The American Business School, IGS University  
Toulouse Business School  
Toulouse Catholic University  
Universite Catholique de Lille  
University of Rennes 1

**Germany**



Baden-Wuerttemberg Cooperative State University Stuttgart  
Baden-Wuerttemberg Cooperative State University Mosbach  
Folkwang University of the Arts  
HTW Berlin University of Applied Science  
Johannes Gutenberg University of Mainz  
University of Augsburg  
University of Music Detmold  
University of Osnabruck  
Technische Hochschule Nuernberg Georg Simon OHM

**Hungary**



The University of Szeged  
University of Debrecen  
University of Pecs

**Ireland**



Institute of Technology Carlow  
Waterford Institute of Technology

**Italy**



Ca' Foscari University of Venice  
Universita Cattolica Del Sacro Cuore  
University of Udine

**Lithuania**



Kaunas University of Technology  
Siauliai University  
Vilnius University  
Vytautas Magnus University

**Netherlands**



Erasmus University Rotterdam  
Fontys Venlo University of Applied Sciences  
Hague Conference on Private International Law  
HAN University of Applied Sciences  
Hanze University of Applied Sciences  
HZ University of Applied Sciences  
Radboud University  
University of Twente  
Windesheim University of Applied Sciences

**Malta**



American University of Malta

**Norway**



Norwegian University of Science&Technology

**Poland**



Cracow University of Economics  
Cracow University of Technology

**Portugal**



University of Porto

**Romania**



Alexandru Ioan Cuza University  
University of Bucharest

**Russia**



Irkutsk National Research Technical University  
National Research University HSE  
Peter the Great St Petersburg Polytechnic Univ  
Saint-Petersburg State University  
Herzen State Pedagogical University  
Novgorod State University  
Repin University  
Ural Federal University  
Yaroslav The Wise Novgorod State University

**Slovenia**



University of Ljubljana

**Slovakia**



Technical University in Zvolen  
University of Zilina

**Spain**



Autonomous University of Barcelona(UAB)  
Comillas Pontifical University  
Universidad Catolica San Antonio  
Universidad de Navarra  
Universitat de Valencia  
University of Jaen  
University of Malaga  
University of Mondragon  
University of Technology, Arts and Design (U-Tad)

**Sweden**



Chalmers University of Technology  
Halmstad University  
Linnaeus University, Vaxjo  
Orebro University  
Umea University  
Uppsala University

**Switzerland**



University of Applied Sciences of Western Switzerland  
Zurich University of Applied Sciences

**Turkey**



Ondokuz Mayis University  
Sabanci University  
Istanbul Bilgi University

**UK**



Cardiff University  
Coventry University  
Royal Holloway and Bedford New College, University  
University of Central Lancashire (UCLAN)  
University of London, Goldsmiths  
University of Sheffield  
University of Sussex  
University of Wales, New Port

**Oceania**

**Australia**



Deakin University  
Griffith University  
James Cook University  
Swinburne University of Technology  
University of South Australia

**New Zealand**



Massey University

**Africa & Middle East**

**Egypt**



The American University in Cairo

**Kenya**



Kenyatta University

**Morocco**



Groupe ISCAE  
Institute of Higher Education in Management (HEM)

Study  
Abroad  
and  
Exchange  
Program

Cultural  
Activities

CAU Global  
Ambassadors

International  
Summer /  
Winter  
Program

Customized  
Study  
Tour  
Program

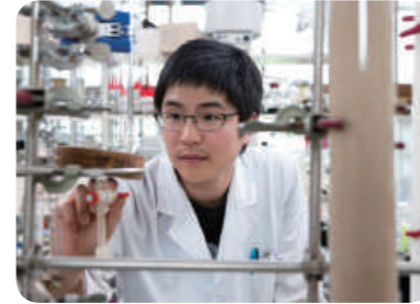
Blue Mir Hall

International  
Partners

Fields of  
Study



# Fields of Study



## College of Humanities

- Department of Korean Language and Literature
- Department of English Language and Literature
- School of European Languages and Cultures (German, French, Russian language and literature)
- School of Asian Languages and Cultures (Japanese, Chinese language and literature, Comparative folk studies)
- Department of Philosophy
- Department of History

## College of Social Sciences

- Department of Political Science and International Relations
- Department of Public Science
- Department of Psychology
- Department of Library & Information Science
- School of Social Welfare (Social Welfare, Child Welfare, Youth Studies, Family Welfare)
- School of Media & Communication
- Department of Urban Planning and Real Estate
- Department of Sociology

## College of Education

- Department of Education
- Department of Early Childhood Education
- Department of English Education
- Department of Physical Education

## College of Natural Sciences

- Department of Physics
- Department of Chemistry
- Department of Biological Sciences
- Department of Mathematics

## College of Biotechnology & Natural Resource

- School of Bioresource and Bioscience (Animal Science and Technology, Integrative Plant Science)
- School of Food Science and Technology (Food and Nutrition, Food Science and Technology)
- Department of Systems Biotechnology

## College of Engineering

- School of Civil and Environmental Engineering, Urban Design and Studies (Civil and Environmental Engineering, Urban Design and Studies)
- School of Architecture and Building Science (Architecture, Architectural Engineering)
- School of Chemical Engineering and Material Science
- School of Mechanical Engineering
- School of Energy System Engineering

## College of ICT Engineering

- School of Electrical and Electronics Engineering
- School of Computer Engineering
- School of Integrative Engineering (Nano Materials Engineering, Biomedical Engineering, Digital Imaging Engineering)

## College of Software

- School of Software

## College of Business and Economics

- School of Business Administration
- School of Economics
- Department of Applied Statistics
- Department of Advertising and Public Relations
- Department of Industrial Security
- Department of International Logistics
- School of Global Knowledge-based Administration

## College of Pharmacy

- School of Pharmacy (not available for exchange)

## College of Medicine

- Department of Medicine (not available for exchange)

## Red Cross College of Nursing

- Department of Nursing (not available for exchange)

## College of Arts

- School of Performing Art and Media (Creative Writing, Theatre, Film Studies, Photography, Dance, TFDesign)
- School of Fine Arts (Korean Painting, Western Painting, Sculpture)
- School of Design (Visual Communication Design, Industrial Design, Fashion Design, Housing & Interior Design, Crafts)
- School of Music (Orchestral Music, Voice Music, Composition, Piano)
- School of Korean Music
- School of Global Arts

## College of Sport Sciences

- School of Sport Sciences (Recreation & Leisure Sports, Sports Industry, Golf)

## College of Art & Technology

- School of Computer Art

Study Abroad and Exchange Program

Cultural Activities

CAU Global Ambassadors

International Summer / Winter Program

Customized Study Tour Program

Blue Mir Hall

International Partners

Fields of Study